

create. communicate. collaborate.

# PALMIERI PALMIERI



.....  
Palmieri Furniture Ltd.

1230 Reid Street  
Richmond Hill  
Ontario Canada L4B 1C4

T: 905 731 9300  
F: 905 731 9878  
TF: 800 413 4440

E: [info@palmierifurniture.com](mailto:info@palmierifurniture.com)  
W: [www.palmierifurniture.com](http://www.palmierifurniture.com)

Navigate

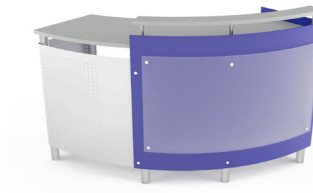
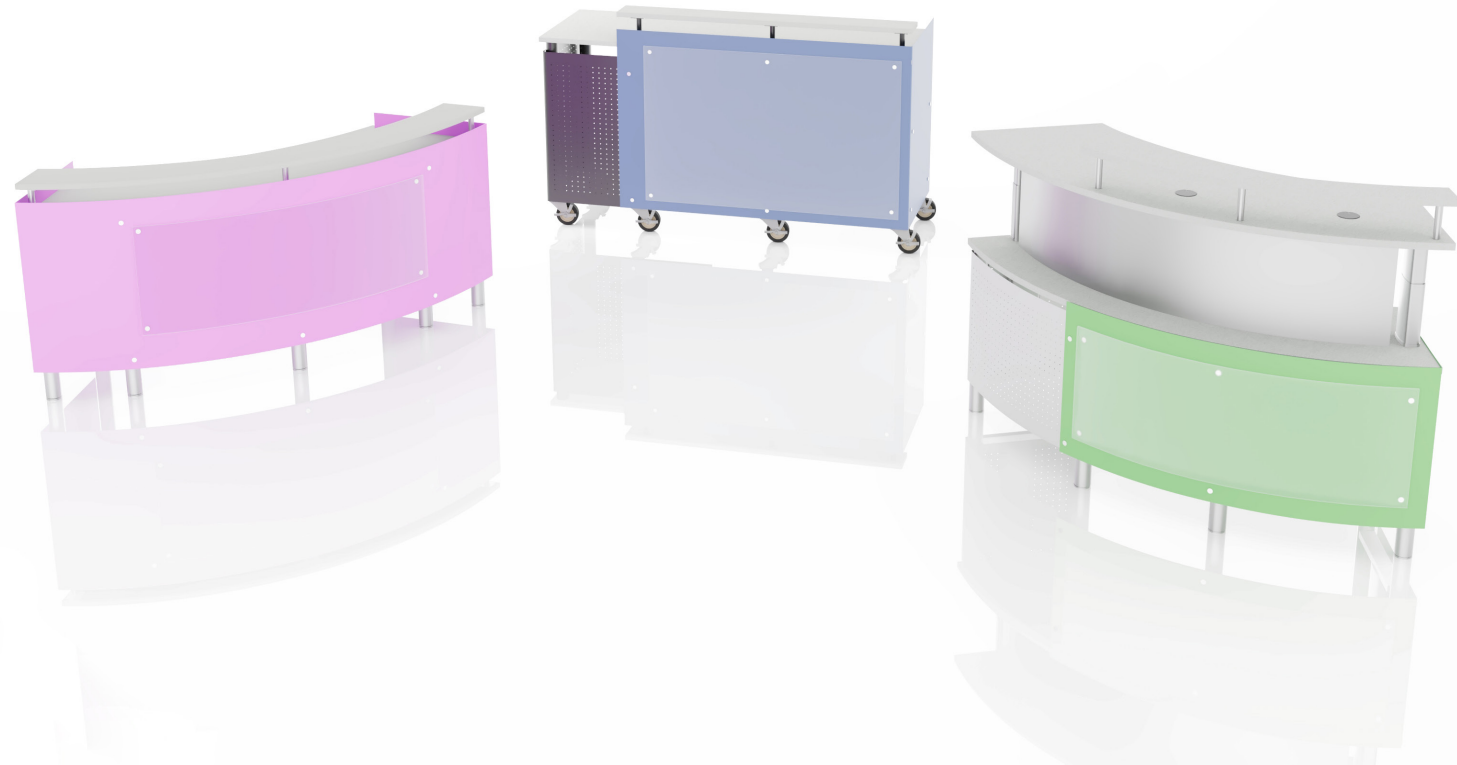


# Navigate

Welcome guests, sitting or standing! Our **Navigate Service Desk** brings innovation and efficiency together, giving you the ability to sit or stand when you greet your guests. It is customizable, functional and a sophisticated service desk that allows you to welcome guests, direct patrons, check-out items and provide information to your clients in style.

*fixed or mobile*

# NAVIGATE SERIES



## Navigate **4100/4200 Series**

Wood or Steel Panel  
Patron Ledge, Grommet, Wire Management

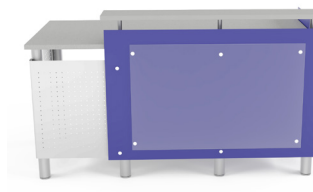
Width : 34-1/2"  
Length : 77"  
Height : 30/36", 39/45", **30-39/36-45"**\*  
Height Adjustable\*



## Navigate **4300/4400 Series**

Wood or Steel Panel  
Patron Ledge, Grommet, Wire Management

Width : 24"  
Length : 48"  
Height : 30/36", 39/45", **30-39/36-45"**\*  
Height Adjustable\*



## Navigate **4500/4600 Series**

Wood or Steel Panel  
Patron Ledge, Grommet, Wire Management

Width : 24"  
Length : 60"  
Height : 30/36", 39/45", **30-39/36-45"**\*  
Height Adjustable\*



## Navigate **4700/4800 Series**

Wood or Steel Panel  
Patron Ledge, Grommet, Wire Management

Width : 24"  
Length : 72"  
Height : 30/36", 39/45", **30-39/36-45"**\*  
Height Adjustable\*



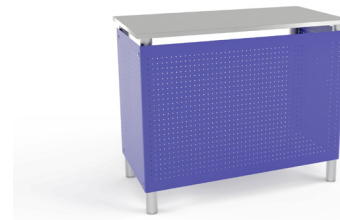
## Navigate **5101 Series**

Steel Panel  
Patron Ledge

Width : 35-3/8"  
Length : 83-1/2"  
Height : 30/36", 39/45"



Navigate **5200/5300 Series**  
 Wood or Steel Panel  
 Grommet, Wire Management  
 Width : 24"  
 Length : 36"  
 Height : 30", 39"



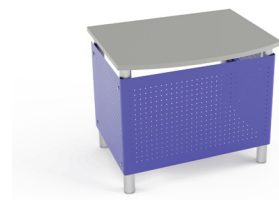
Navigate **5400/5500 Series**  
 Wood or Steel Panel  
 Grommet, Wire Management  
 Width : 24"  
 Length : 48"  
 Height : 30", 39"



Navigate **5600/5700 Series**  
 Wood or Steel Panel  
 Grommet, Wire Management  
 Width : 24"  
 Length : 60"  
 Height : 30", 39"



Navigate **5800/5900 Series**  
 Wood or Steel Panel  
 Grommet, Wire Management  
 Width : 24"  
 Length : 72"  
 Height : 30", 39"



Navigate **6200/6300 Series**

Wood or Steel Panel  
ADA, Extended Surface Top

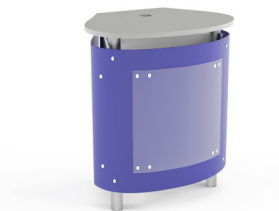
Width : 24"  
Length : 36"  
Height : 30"



Navigate **6400/6500 Series**

Wood or Steel Panel  
Book Return

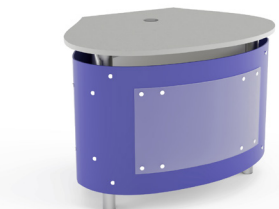
Width : 24"  
Length : 36"  
Height : 30"



Navigate **8200/8201 Series**

Steel Panel  
Grommet

Width : 26"  
Length : 34"  
Height : 36"



Navigate **9200/9201 Series**

Steel Panel  
ADA, Grommet

Width : 34-1/2"  
Length : 45"  
Height : 36"



DECORATIVE PANEL:

The front of the unit has a 1/4" thick frosted acrylic panel with diameter stand-off hardware. For custom decorative acrylic panel, please inquire with Palmieri for pricing.

NOTES:

\* Custom Top materials may include Solid Surface, Quartz, or Natural Stone.

\* Metal Paint colour(s) for the Panels and Legs must be specified at the time of order.



Navigate **6100 Series**

Steel Panel  
Two Lockable Steel Doors, Fixed Interior Shelf, Wire Management

Width : 40"  
Length : 92-1/2"  
Height : 36"



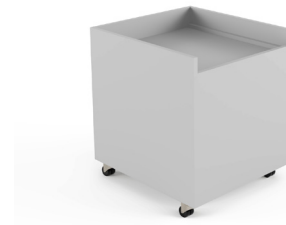
Navigate **7101 Series: MOBILE Unit**

Steel Panels  
4" Casters, Lockable Door

Width : 20"  
Length : 20"  
Height : 30"

*book returns & mobile units*

# ADD ONS



Navigate **Book Return Truck**  
Wood Veneer or Laminate  
Mobile

Width : 25-1/4"  
Length : 23-1/2"  
Height : 26-3/4"



Navigate **Cushioned Seat**  
Wood Veneer or Laminate  
Locking Box, File

Width : 18"  
Length : 18"  
Height : 22"



Navigate **Cushioned Seat**  
Wood Veneer or Laminate  
Locking 2 Box, File

Width : 18"  
Length : 18"  
Height : 28"



Navigate **Cushioned Seat**  
Wood Veneer or Laminate  
Locking 2 File

Width : 18"  
Length : 18"  
Height : 28"

## RESOURCES

### HOW TO BUY FROM PALMIERI

Palmieri has a nationwide dealer network with partners located across the United States and Canada that can assist you with product selection, purchase and installation. If you would like to locate a Palmieri authorized dealer or representative in your area, please contact our Customer Service team at **1-800-413-4440** or email us at [info@palmierifurniture.com](mailto:info@palmierifurniture.com).